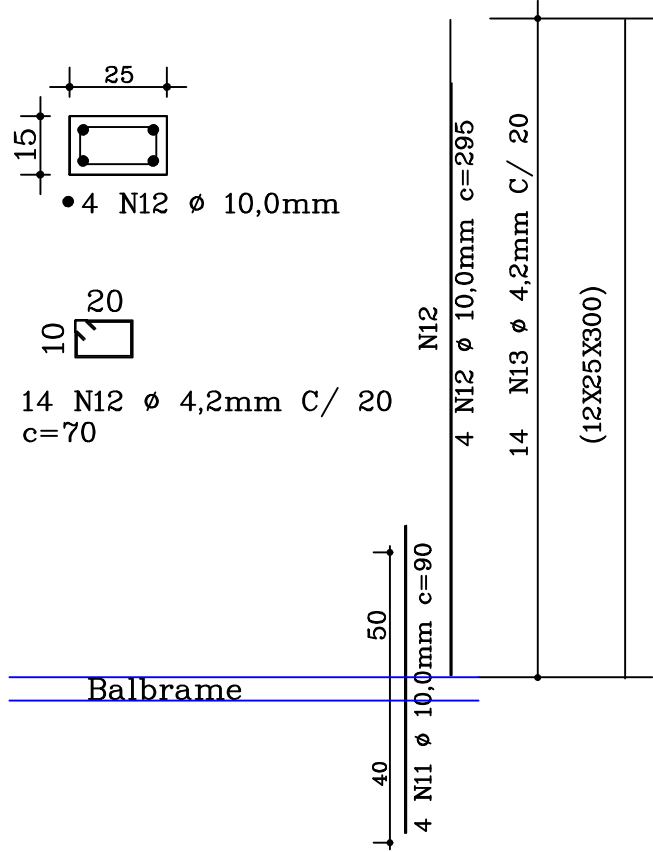


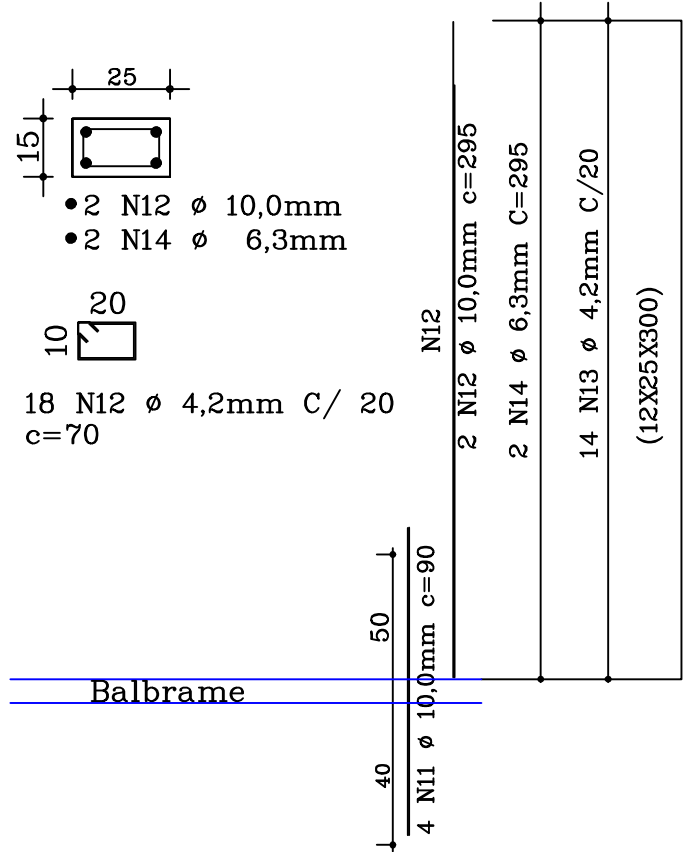
PILARES (12X25X300)

P1 (14x)



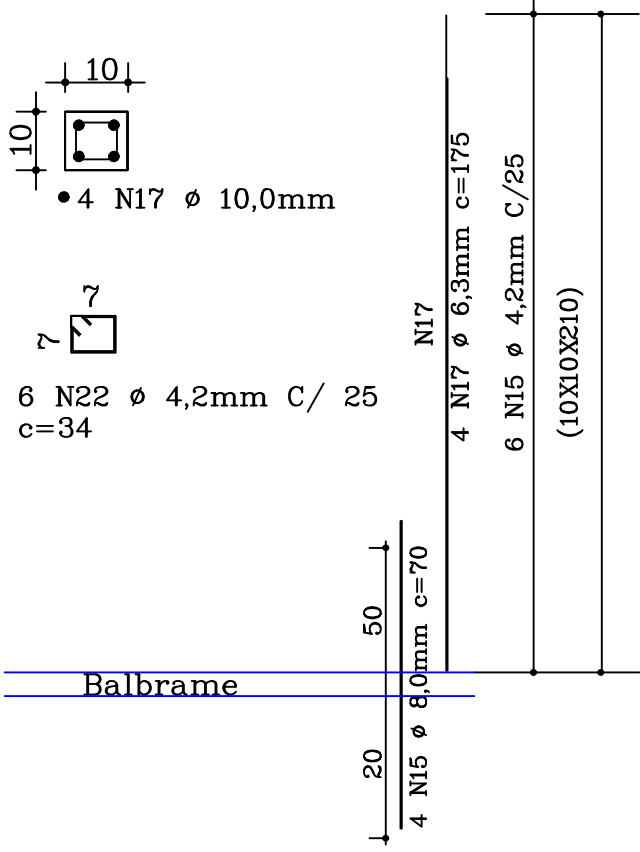
PILARES (12X25X300)

P2 (3x)

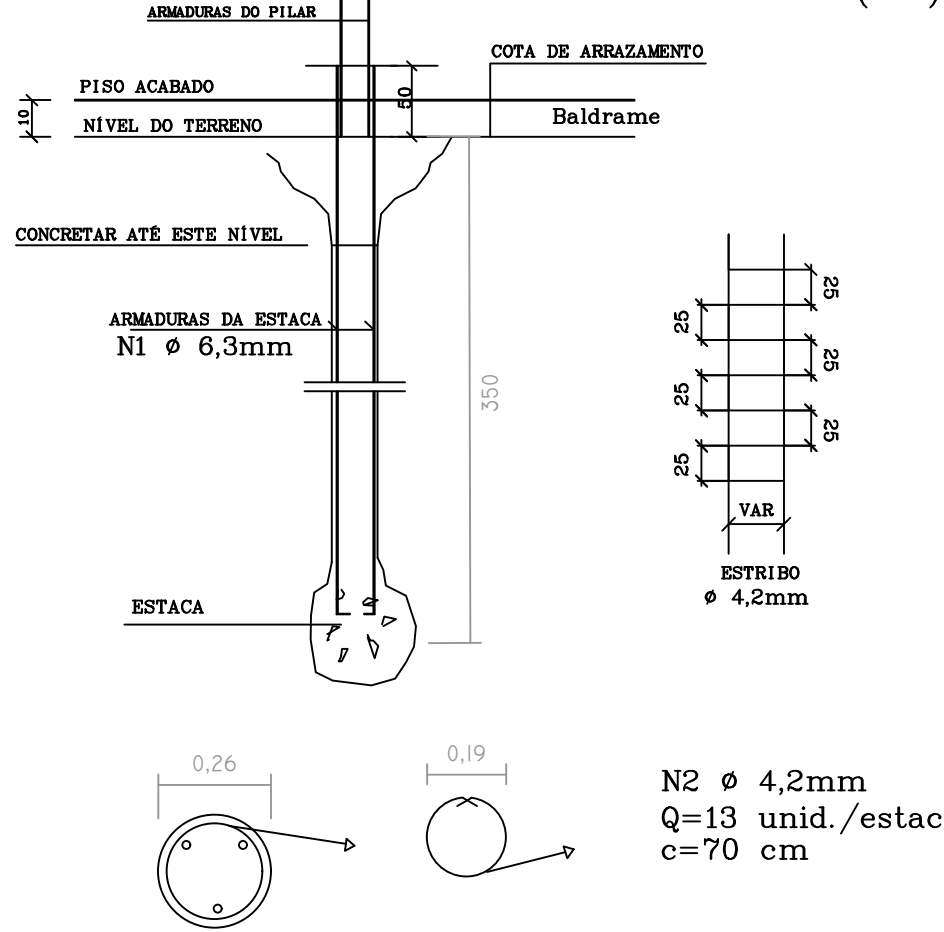


PILARES (10X10X180)

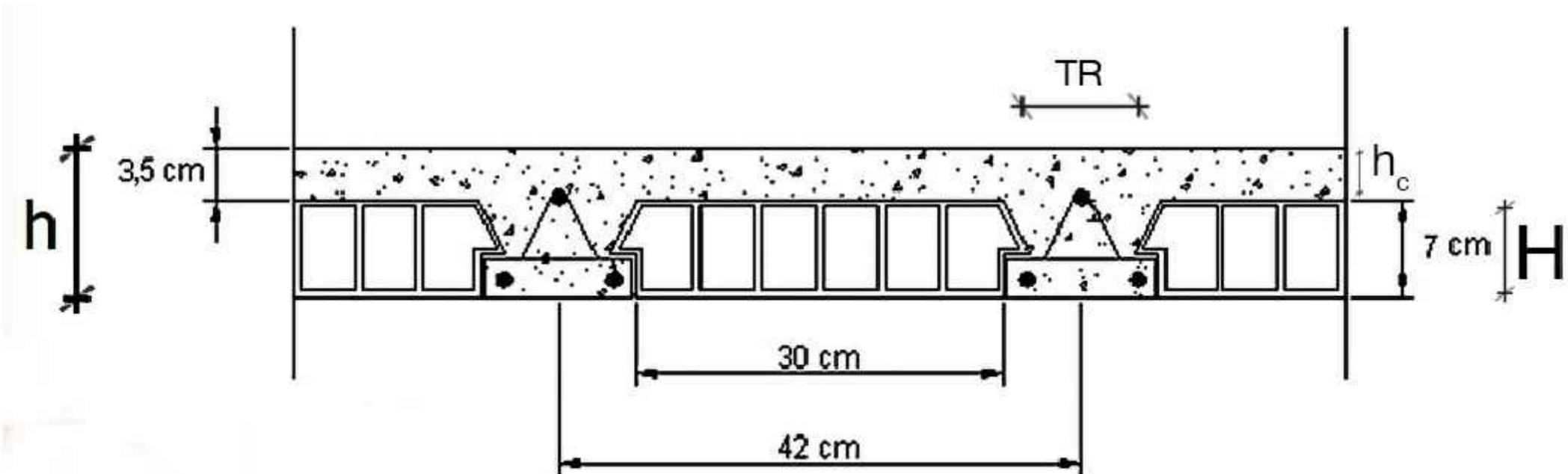
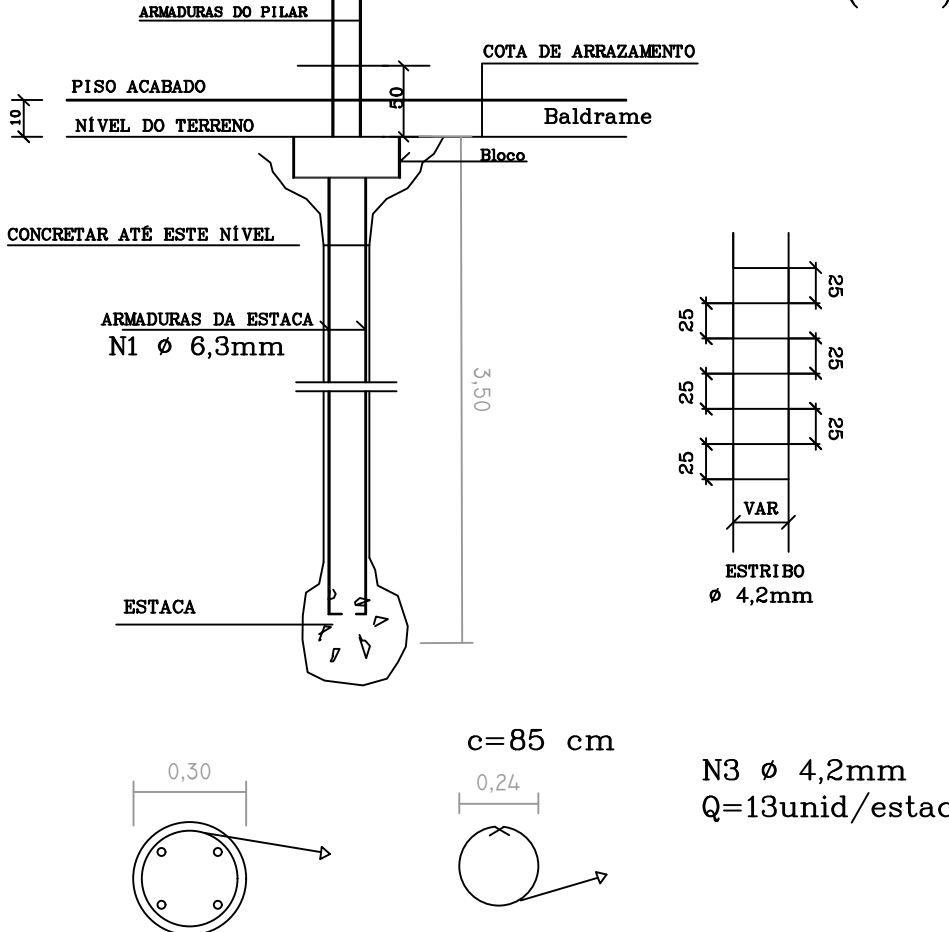
P3 (3x)



DETALHE GÊNÉRICO DAS ESTACAS Ø 20cm (3X)



DETALHE GÊNÉRICO DAS ESTACAS Ø 30cm (17X)



Intereixo

TR = armação treliçada

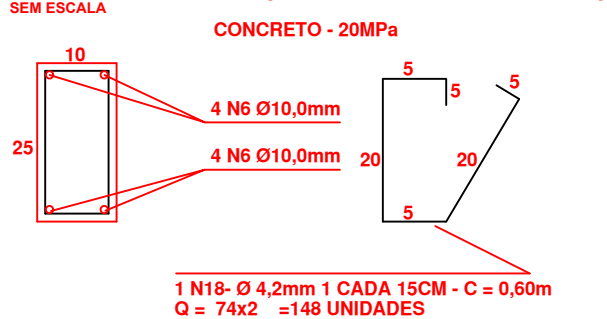
H = altura do enchimento (bloco cerâmico)

h_c = altura da capa de concreto

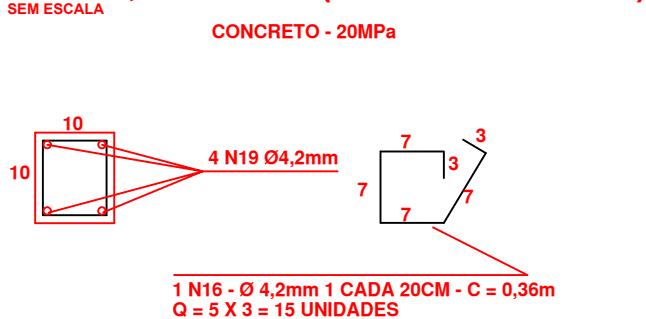
h ou LT = altura total da laje, contando com a capa de concreto

VIGAS CINTA

VC 201 e 205 (10 x 25 x 1125 cm)



VC 202,203 e 204 (10 x 10 x 113 cm)



VC 206, 207 e 208 (10 x 25 x 1005 cm)

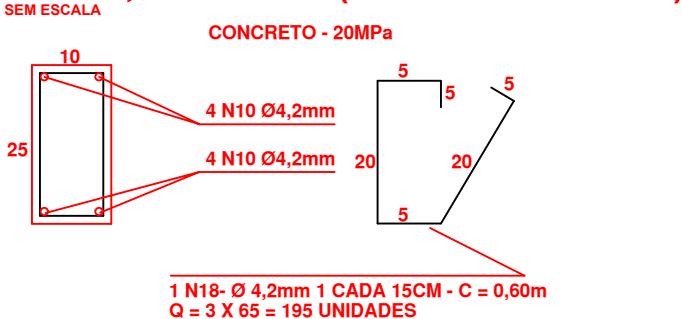


TABELA DE ARMADURA							
POSICÃO	AÇO	Ø (mm)	COMPR.(m)	QUANT.	TOTAL (m)	kg/m	TOTAL (kg)
N1	CA-50 A	6,3	3,35	77	257,95	JÁ CONTEMPLADO	
N2	CA-60 B	4,2	0,70	39	27,30	NO ORÇAMENTO DAS	
N3	CA-60 B	4,2	0,85	221	187,85	ESTACAS	
N4	CA-50 A	6,3	1,86	17	31,62	0,245	7,75
N5	CA-50 A	6,3	1,76	102	179,52	0,245	43,98
N6	CA-50 A	10,0	11,45	16	183,20	0,617	113,03
N7	CA-60 B	4,2	0,76	286	217,36	0,109	23,69
N8	CA-50 A	6,3	1,18	12	14,16	0,245	3,47
N9	CA-60 B	4,2	0,54	18	9,72	0,109	1,06
N10	CA-50 A	8,0	10,20	24	244,80	0,395	96,70
N11	CA-50 A	10,0	0,90	68	61,20	0,617	37,76
N12	CA-50 A	10,0	2,95	58	171,99	0,617	106,11
N13	CA-60 B	4,2	0,70	238	166,60	0,109	18,16
N14	CA-50 A	6,3	2,95	6	17,70	0,245	4,34
N15	CA-50 A	8,0	0,70	12	8,40	0,395	3,32
N16	CA-60 B	4,2	0,36	33	11,88	0,109	1,29
N17	CA-50 A	6,3	1,75	12	21,00	0,245	5,15
N18	CA-60 B	4,2	0,60	343	205,80	0,109	22,43
N19	CA-60 B	4,2	1,18	12	14,16	0,109	1,54

RESUMO DO AÇO				
AÇO	Ø (mm)	COMPR.(m)	kg/m	PESO (KG)
CA-60 B	4,2	625,52	0,109	68,18
CA-50 A	6,3	264,00	0,245	64,68
CA-50 A	8,0	253,20	0,395	100,01
CA-50 A	10,0	416,39	0,617	256,91
PESO TOTAL CA-60 B				68,18
PESO TOTAL CA-50 A				421,60

MATERIAIS				
	FCK (Mpa)	UNID	QUANT	TOTAL
CONCRETO P/ BLOCOS, VIGAS E PILARES	20	m³	8,01	
CONCRETO P/ CAPA DE LAJE - E = 4,0 cm	20	m³	4,52	12,53
FORMAS P/ FUNDAÇÕES		m²	50,90	
FORMAS P/ ESTRUTURA		m²	54,93	105,83

PROJETO ESTRUTURAL

FOLHA

02/02

OBRA: Vestiário e Alojamento com 116,28m²

END.: Rua Manoel Barbosa - Centro - Ventania - PR

PROPRIETÁRIO



PREFEITURA MUNICIPAL DE VENTANIA PR

ESCALA

INDICADA

DATA

JULHO / 2019

DESENHO

JEFFERSON PHILLIPI

RESP. TÉCNICO
Eng. CIVIL:EDIO JOSÉ STIMAMIGLIO
CREA PR-14315/D

ANTÔNIO HELLY SANTIAGO
PREFEITO MUNICIPAL